



  
Mariana  
Real Estate

**Flat 16 Chatfield House, Marsh Street  
Bristol, BS1 1RT  
£1,850 Per Month**

Situated in an enviable location, and in the heart of the city centre, a Two bedroom, Two bathroom (one bathroom without toilet) apartment located on the fourth floor of this beautiful period building.

Cheltenham House is located in Bristol's historic city centre and benefits from close proximity to a plethora of the areas bohemian cafes and restaurants. This fabulous location is to local amenities such as The Watershed, Castle Park, and the local trendy boutiques and shopping malls. Transport facilities are excellent, and both bus services and main line train station are close by.

No parking.

No lift in the building.





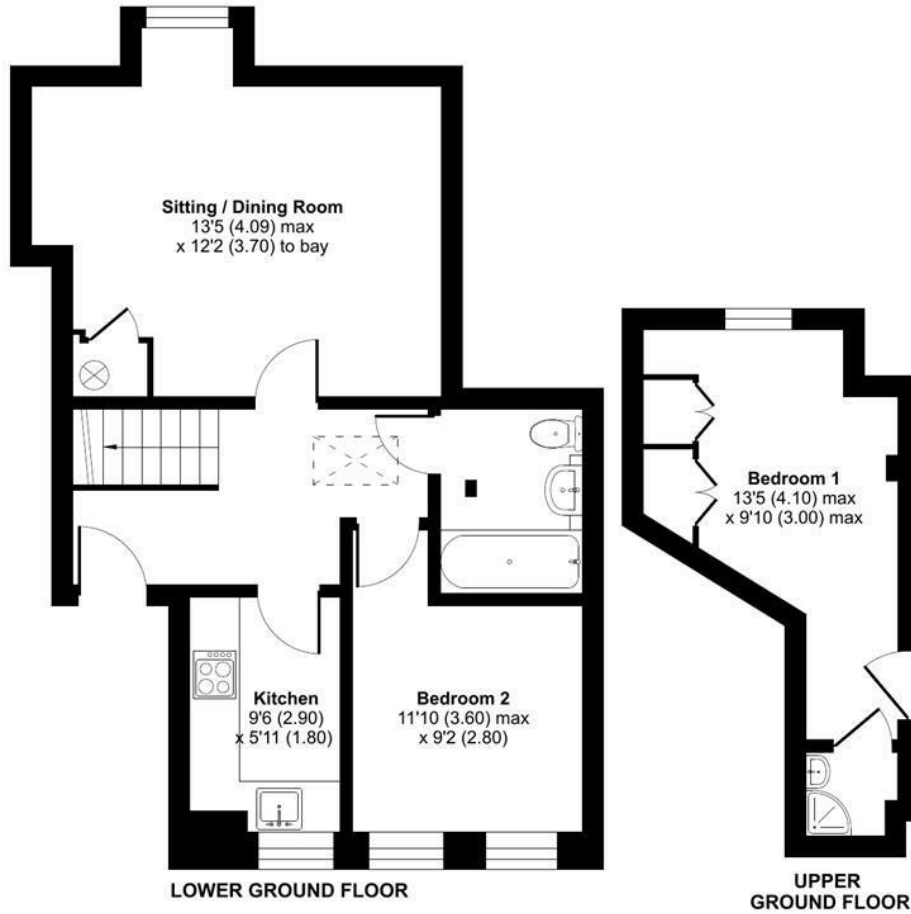




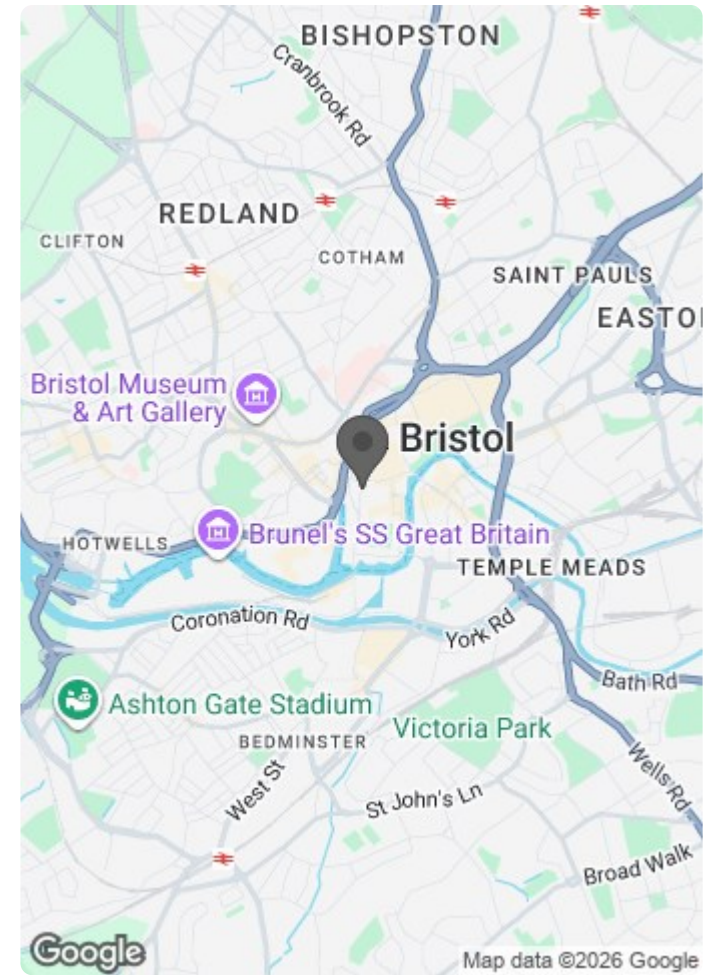
# Marsh Street, Bristol, BS1

Approximate Area = 612 sq ft / 56.8 sq m

For identification only - Not to scale



Floor plan produced in accordance with RICS Property Measurement Standards incorporating International Property Measurement Standards (IPMS2 Residential). © nichicom 2024. Produced for Mariana Real Estate Ltd. REF: 1120242



Energy Efficiency Rating		Current	Potential
Very energy efficient - lower running costs			
(92 plus) A			
(81-91) B			
(69-80) C			
(55-68) D			
(39-54) E			
(21-38) F			
(1-20) G			
Not energy efficient - higher running costs			
England & Wales		EU Directive 2002/91/EC	

Environmental Impact (CO <sub>2</sub> ) Rating		Current	Potential
Very environmentally friendly - lower CO <sub>2</sub> emissions			
(92 plus) A			
(81-91) B			
(69-80) C			
(55-68) D			
(39-54) E			
(21-38) F			
(1-20) G			
Not environmentally friendly - higher CO <sub>2</sub> emissions			
England & Wales		EU Directive 2002/91/EC	

77

61